

THE INTERSECTION OF SUBSTANCE USE DISORDER, HUMAN TRAFFICKING AND RECOVERY HOUSING, II

NARR Best Practice Summit 2023

Autumn McCraw, PRSS, Suthriver, Advocate

GOALS FOR THIS SESSION

Intro to Human Trafficking

Intersectionality of SUD
and HT

Intersectionality of
Recovery Housing and HT

Serving Survivors in
Recovery Residences

Resources



WHAT COMES TO YOUR MIND WHEN YOU
THINK OF HUMAN TRAFFICKING ?

WHAT IS HUMAN TRAFFICKING?

The Trafficking Victims Protection Act (TVPA) of 2000 defined human trafficking as the recruitment, transportation, transfer, harboring or receipt of persons by improper means (such as force, abduction, fraud, or coercion) for an improper purpose including forced labor or sexual exploitation.

The ACT of:

Recruitment
Transport
Transfer
Harboring
Receipt of Persons

...By MEANS of..

Threat or use of Force
Fraud
Coercion
Abduction
Deception
Abuse of power
Giving payments, benefits
or “gifts”

**For the PURPOSE of
EXPLOITATION**

Forced Labor
Domestic Servitude
Sexual Exploitation
Forced Prostitution
Organ Harvesting
Child Marriage

TYPES OF HUMAN TRAFFICKING

LABOR TRAFFICKING-

Compelling or inducing another to engage in labor, or recruiting, enticing, harboring or transporting another by providing drugs, withholding or destroying government documents, debt servicing, force, or a plan or pattern of coercive conduct.

SEX TRAFFICKING-

Profiting from sex work by providing drugs, using false or misleading statements, withholding or destroying government documents, debt servicing, force, a plan or pattern of coercive conduct, or other acts.

Check out the polarisproject.org to learn about the 25 typologies of human trafficking.



SEX TRAFFICKING

Strip Clubs

Track / Hoe Stroll

Pornography

Escort Services

Online Ads i.e. Backpage

Massage Parlors

Major Hotels

Trap House

Anywhere

Federal law automatically recognizes persons under 18 who have been sexually exploited as victims of sex trafficking



LABOR TRAFFICKING

Recovery Housing

Traveling Sales Crew

Panhandling

Landscaping

Agricultural

Hair and Nail

Hotels and Hospitality

Construction

Manufacturing

Domestic Servitude

Salons

Health and Elder Care

HOW DOES HUMAN TRAFFICKING HAPPEN ?

Where there are vulnerable populations, there is exploitation.

Vulnerable Populations

Need for love
and
acceptance

LGBTQIA2s+

Substance Use

Age

Race

Foster Care/
Aging Out

Abuse

Runaway
/Houseless

Generational
Trauma

Bullying

Social Media /
Internet

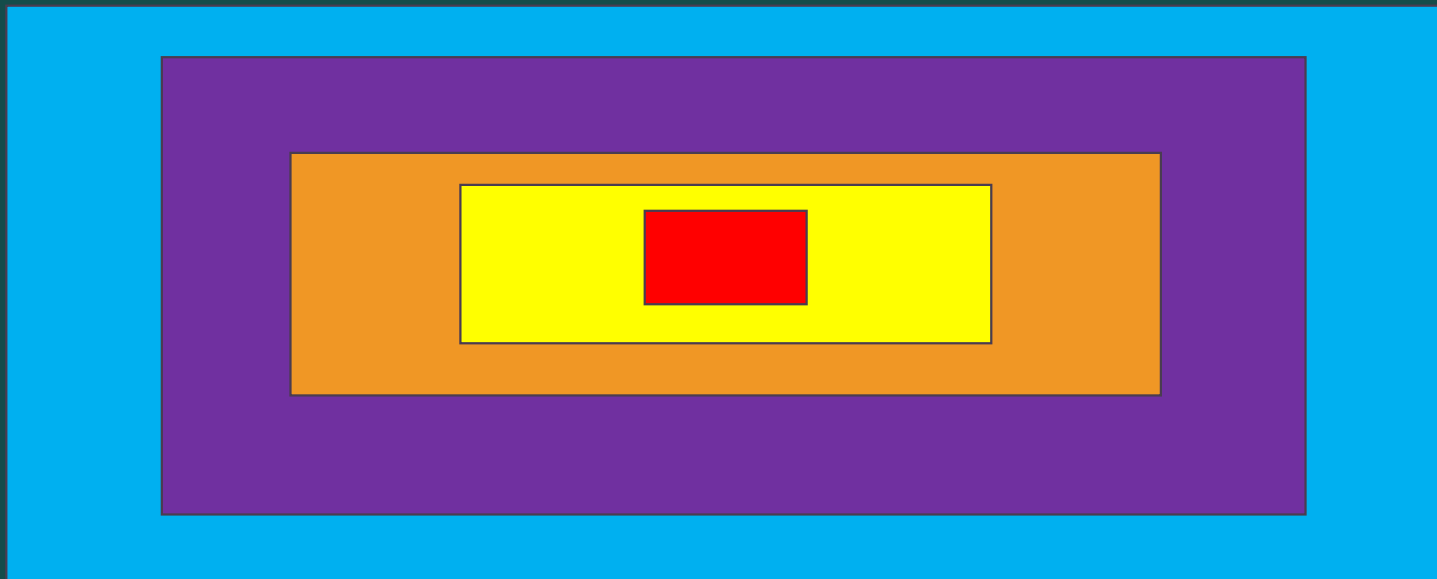
Immigration
Status

ANYONE

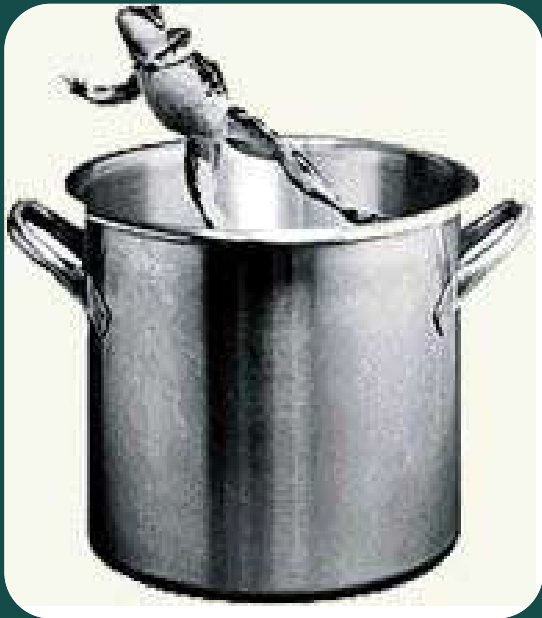
GROOMING : IS A GRADUAL EXPANSION OF BOUNDRIES

A systematic process that aims to achieve complete control over someone's identity or individuality using a combination of physical, mental, and emotional means.

IT DOES NOT HAPPEN OVERNIGHT



IF IT WERE THAT OBVIOUS, WE
WOULD JUMP RIGHT OUT!



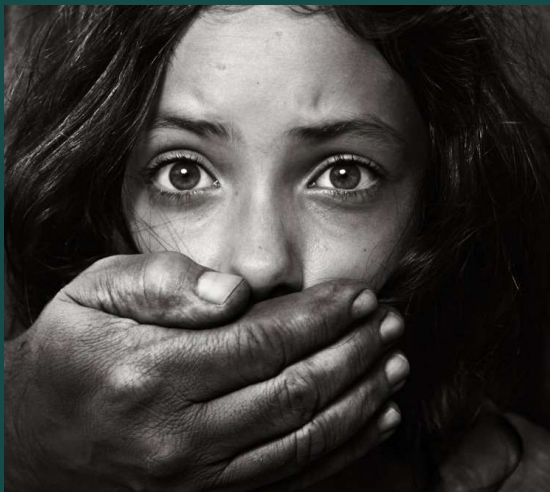
IT LOOKS
MORE
LIKE
THIS



Brainwashing	Systematic effort to destroy an individual's former loyalties and beliefs and to substitute loyalty to a new ideology or power. It has been used by religious cults as well as by radical political groups. The techniques of brainwashing usually involve isolation from former associates and sources of information; an exacting regimen calling for absolute obedience and humility; strong social pressures and rewards for cooperation; physical and psychological punishments for noncooperation, including social ostracism, and criticism, deprivation of food, sleep, and social contacts, bondage, and torture; and constant reinforcement. Its effects are sometimes reversed through deprogramming which combines confrontation and intensive psychotherapy. (Concise encyclopedia)
Trauma Bonding	Is a term developed by Patrick Carnes, is the misuse of fear, excitement, sexual feelings, and sexual physiology to entangle another person. Many primary aggressors tend toward extreme behavior and risk taking, and trauma bonding is a factor in their relationships.
Stockholm Syndrome	The psychological tendency of a hostage to bond with, identify with, or sympathize with his or her captor
Identity Disturbances	Identity disturbance is used to describe an inconsistent or incoherent sense of self. It is associated with <u>borderline personality disorder</u> , as identity disturbance is one of the criteria for the condition. Identity disturbance often shows up as consistent and remarkable changes in a person's beliefs, values, and behaviors that significantly impact their life, such as difficulty in maintaining jobs or relationships.



MISIDENTIFICATION



HUMAN TRAFFICKING
LOOKS DIFFERENT IN A
THIRD WORLD COUNTRY
THAN A *FIRST WORLD*
COUNTRY, LIKE AMERICA

Misinformation

Spread via movies, tv, social media

#savethechildren

Traffickers target people they don't know

Adults and children are kidnapped

Labor trafficking only happened to
“undocumented persons”

If a person “chooses” the lifestyle they
weren't trafficked

All sex workers are being trafficked



STIGMA IS REAL, LANGUAGE MATTERS

STIGMATIC

PROSTITUTE
DIRTY
THEIR CHOICE
EASY
SLUTTY
DRUG ADDICT
KNOWS WHAT THEY ARE DOING
CRIMINAL
LIKES SEX
PRETTY WOMAN
LOW LIFE
THROW AWAY
HOE
STRIPPER
DOPE WHORE

PERSON CENTERED

VICTIM
HELPLESS
EMPATHATIC
SYMPATHY
NO CHOICE
TRICKED
DUPED
EXPLOITED
NEEDS HELP
TAKEN ADVANTAGE OF
A PERSON / CHILD
RAPED
NO CHICE
EXPLOITED
ANY PERSON CONTEMPLATING
RECOVERY

Why is this important ?

Treatment centers and recovery residences house survivors and victims that are actively being trafficked!

Addiction substantially increases a person's vulnerability

Drug use has been initiated by traffickers as a means of coercion and control

When a victim has SUD and actively using, a trafficker does not need need to use violence as a means of control

SUD is a result of trafficking and Trafficking is a result of SUD

Addiction and Human Trafficking

Trafficking of Persons with Disabilities in the United States



United States v. Paoletti-Lemus, et al., No. 1:97-cr-00768 (E.D.N.Y. 1998)

United States v. Kozminski, 487 U.S. 931 (1988)

United States v. Kaufman, 546 F.3d 1242 (2008)

Equal Employment Opportunity Commission v. Henry's Turkey Service, (2013)

The Human Trafficking Legal Center Bridge to Justice. (2018, October 16)

Photo Credit WRAL News. (2006, August 4). *Scam victims were just trying to help*



Recovery Residences and Labor Trafficking

According to a member of the National Sheltered Alliance, 100% of the residents of their "safe houses" identify with having SUD.

When entering recovery and / or coming out of incarceration, people are at their most vulnerable.

Some organizations use residents as an unpaid labor source to support their organization.

When looking to identify victims/survivors of HT, we don't need to look any further than our treatment centers and recovery residences.

Recovery Housing and Human Trafficking



LABOR PRACTICES

Voluntary

No consequences for declining

No favoritism /special privileges

Equal opportunity for all residents

Does not impact recovery goals

Treated as other employment situations

Wages are fair market value (or minimum wage)

Arrangements are viewed as fair by other residents

Has no affect recovery environment or moral of home

Terminated work has no recriminations that impair recovery



(NARR Standard 1.A.2.g)



EXAMPLE



SERVING SURVIVORS OF SEXUAL EXPLOITATION

RED FLAGS

Mental health

Extreme behavior

Talks about a controlling person in their life

Does not have ownership of important documents

Can't give address

Jail/Prison

Inconsistencies in story

DV

Repeat homelessness

Will not be seen alone

Looks down when talking

Oppositional / Defiant

Wanting to shock or startle you

Branding / Tattoos

Consistent miscarriages

Inserted foreign objects / stuck tampons

Regular STD checks / verification of results

Older "boyfriend"

Expensive items

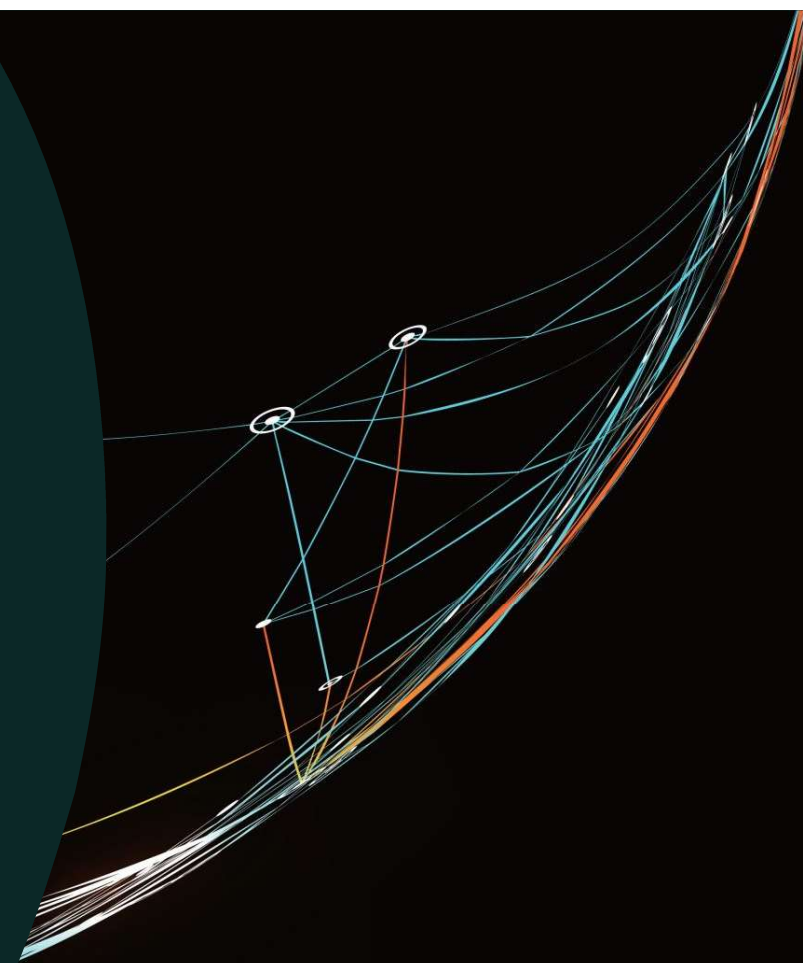
Signs like domestic violence - hyper sexuality

Purposeful pregnancy by "boyfriend"



Resources for Evaluation and Education

- Vera Institute Human Trafficking Tool
- National Human Trafficking Training and Technical Assistance Center, Adult HT Tool Kit and Guide
- National Human Trafficking Training and Technical Assistance Center , How to Build Survivor Informed Organizations
- Polaris Project Typology of Modern-Day Slavery



BEFORE YOU BEGIN

Am I trained / experienced?

Do I have a trusting relationship with this person?

Do I have resources for this person?

Can I help develop a safety plan?

Am I trained on anti-stigmatic language?

Am I prepared to care for this person after they open up?

Can I take care of myself?

Am I ready to just listen?



Common Survivorship Issues

Physical

- General Bodily Harm
- Injury from abuse, exhaustion
- Reproductive harm
- STI's, pregnancy, sterilization, genital mutilation

Emotional

- Fear, Anxiety
- Guilt, Shame
- Mistrust, Betrayal
- Anger, Irritability
- Dissociation
- Little emotional regulation
- Dissociation, Flashback
- Nightmares, Panic Attacks
- Denial, Shock
- Numbness, Detachment
- Trauma Bonding/Traumatic Attachment

Behavioral

- Avoidance
- SUD
- Disordered Eating
- Sleep Issues
- Self Harm, Risk Taking, Suicidally
- Money Management Skills
- Parenting Support Help

10) Education or job training.

9) Navigating shame and stigmatization for being exploited

8) Relationship repair with safe friends and family

7) Accessing quality, trauma informed medical care.

6) Accessing a healthy supportive community

5) Getting a job that is a good fit

4) Getting a stable, living wage job

3) Safe a safe place to stay

2) Finding trustworthy people

1) Behavioral / mental health services with qualified providers

Needs
At
Exit

Maslow's Hierarchy of Needs



Supportive Theories and Therapies

- Person-Centered
- Polyvagal Theory
- Emotion Focused Therapy
- EDMR
- Body-Focused /Somatic Therapy
 - art/dance/movement/yoga
- Mindfulness -Based Therapy
- Internal Family Systems

Peer Suggested:

- Animal-Assisted Therapies (Whoeler and Akers, 2022)
- Object-Relations Family Theory (Rocha, 2020)
- Relational-Cultural Therapy (Herchberger, 2021)

Most Harmful Sources of Support

Intimate partner(s)

Family

A faith community (for example, church, mosque, temple, synagogue, etc.)

Help from service provider/non-profit organization that is faith-based

My employer/my job

Internet, social media, listservs

Friends (including chosen family)

Support from a government agency

Help from service provider/non-profit organization that is not explicitly faith-based

Other survivors who experienced similar exploitation and understand what I was going through

Most Valuable and Most Harmful Supports At Exit

Most Valuable Sources of Support

My own resourcefulness

Counseling/therapy

Other survivors who experienced similar exploitation and understand what I was going through

Hobbies (music, art, etc.)

Support from an advocate

Support groups


Help from service provider/non-profit organization that is not explicitly faith-based

Help from service provider/non-profit organization that is faith-based

A faith community (for example, church, mosque, temple, synagogue, etc.)

Friends (including chosen family)

Protocol Response: Wrap Around Services



Trauma focused therapy

Creative Therapy

Survivor mentorship

Individual case management

Economic Empowerment Focus

Think outside the box!!

THERE'S NO COOKIE CUTTER WAY TO HELP OR WORK WITH VICTIMS/SURVIVORS.


We want this

But often get this

THERE ARE MANY AVENUES THAT WILL REACH THE SAME DESTINATION

*HUGE NEED FOR WRAP AROUND SERVICES





Compassion is not a relationship between the healer and the wounded. It's a relationship between equals. Only when we know our own darkness well, can we be present with the darkness of others. Compassion becomes real when we recognize our shared humanity.

~Pema Chodron

Re-Defining Advocacy for Victims of HT



Advocacy is an activity by an individual or group which aims to influence decisions within political, economic, and social systems and institutions. A great advocate will seek to lift-up and empower their client.

Resource List

- NATIONAL HUMAN TRAFFICKING HOTLINE
1-888-373-7888
www.humantraffickinghotline.org
- WV COALITION AGAINST DOMESTIC VIOLENCE www.wvcadv.org
- SHARED HOPE INTERNATIONAL
www.sharedhope.org
- ENDING THE GAME
www.endingthegame.com
- Elevate Academy
- THE AVERY CENTER
- Survivor Leadership Institute
- THORN www.wearethorn.org
- FIGHT THE NEW DRUG
www.fightthenewdrug.org
- WV HUMAN TRAFFICKING TASK FORCE
www.stophumantraffickingwv.org
- The National Sheltered Alliance - resource guide
- Domestic Violence: 24-hour Hotline: 1-800-799-SAFE (7233)
- Sexual Abuse: 24-hour Hotline: 1-800-656-4673
- Suicide: 24-hour Hotline: 1-800-273-TALK (8255)
- Dating Violence: 24-hour Hotline: 1-866-331-9474
- Runaway and Homeless Youth: 24-hour Hotline: 1-800-RUNAWAY (786-2929)
- Missing Children and Child Pornography:
- National Center for Missing and Exploited Children 24 hour Hotline: 1-800-THE-LOST (843-5678)
- YOUR STATE HT TASK FORCE
- The Polaris Project

THANK YOU!

Autumn McCraw
(304) 989-0388

autumn@wvarr.org

consult.autumn@gmail.com